



Speaking.
In East Boston, lots of people are telling stories, public through podcasts, blogs, writing, archives, and more. We can envision many futures. You can learn from the past. With many histories about a place, or just talking to people about the past! There's so much anything from charters, newspaper articles, photographs, speak and tell you about the past. Primary sources can be observing "primary sources." These are artifacts that historians, landscapes have histories, too! What makes these stories histories is that they're told through personal histories, family histories, and community representing a certain view of the world. We all have who came before us. Every history that's told is a story, and dates in history class at school. But history is a form of storytelling. It's a way that we can connect with those Boston powered by youth. ZUMIX broadcasts the voices and culture of Boston youth through music, stories, and bilingual conversation.

What's up Eastie?
This is a ZUMIX radio show about topics of interest to residents of East Boston, a changing, dynamic, exciting, and historic neighborhood. You can tune in to *What's up Eastie* on the dial: 94.9FM @whatsupeastie

Find out more about how East Bostonians can find funds to support community organizing and planning in the companion toolkit, **PODER**.

Find out more about East Boston, lots of people are telling stories, public through podcasts, blogs, writing, archives, and more. We can envision many futures. You can learn from the past. With many histories about a place, or just talking to people about the past! There's so much anything from charters, newspaper articles, photographs, speak and tell you about the past. Primary sources can be observing "primary sources." These are artifacts that historians, landscapes have histories, too! What makes these stories histories is that they're told through personal histories, family histories, and community representing a certain view of the world. We all have who came before us. Every history that's told is a story, and dates in history class at school. But history is a form of storytelling. It's a way that we can connect with those Boston powered by youth. ZUMIX broadcasts the voices and culture of Boston youth through music, stories, and bilingual conversation.

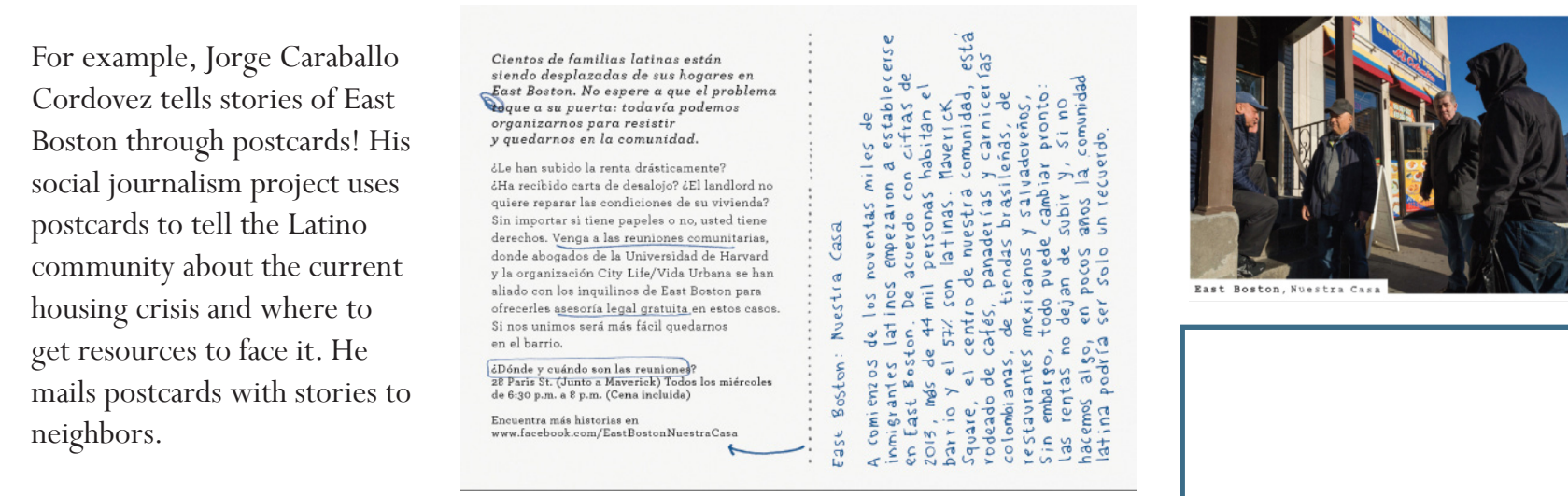
Whitrop & East Boston, Noddle Island in foreground, 1925. Looking west.



RECOUNTING HISTORY

WAYS OF STORYTELLING: RECOUNTING HISTORIES, RITUALS, ART, MAPS, AND ALTERNATIVE NARRATIVES

There are many ways to practice storytelling. We can look to how people have told stories in the past to guide us. You may like one of the ways of storytelling in this toolkit, or you may do something completely different. You may be inspired by previous forms of storytelling, or respond with your own perspectives to narratives from the past you may not feel are representative. While looking at these examples, think about how you would tell your story or the story of your neighborhood.



Find out more about East Bostonians have practiced storytelling as resistance in the companion toolkit, **LATINO FUTURES FOR CONDOR STREET**



GET CREATIVE:
HOW WOULD YOU TELL YOUR STORY? WHO ARE PEOPLE IN YOUR LIFE THAT HAVE TOLD YOU STORIES? (WRITE OR DRAW PICTURES TO THE RIGHT)

Learn more about Jorge Carballo Cordovez's project

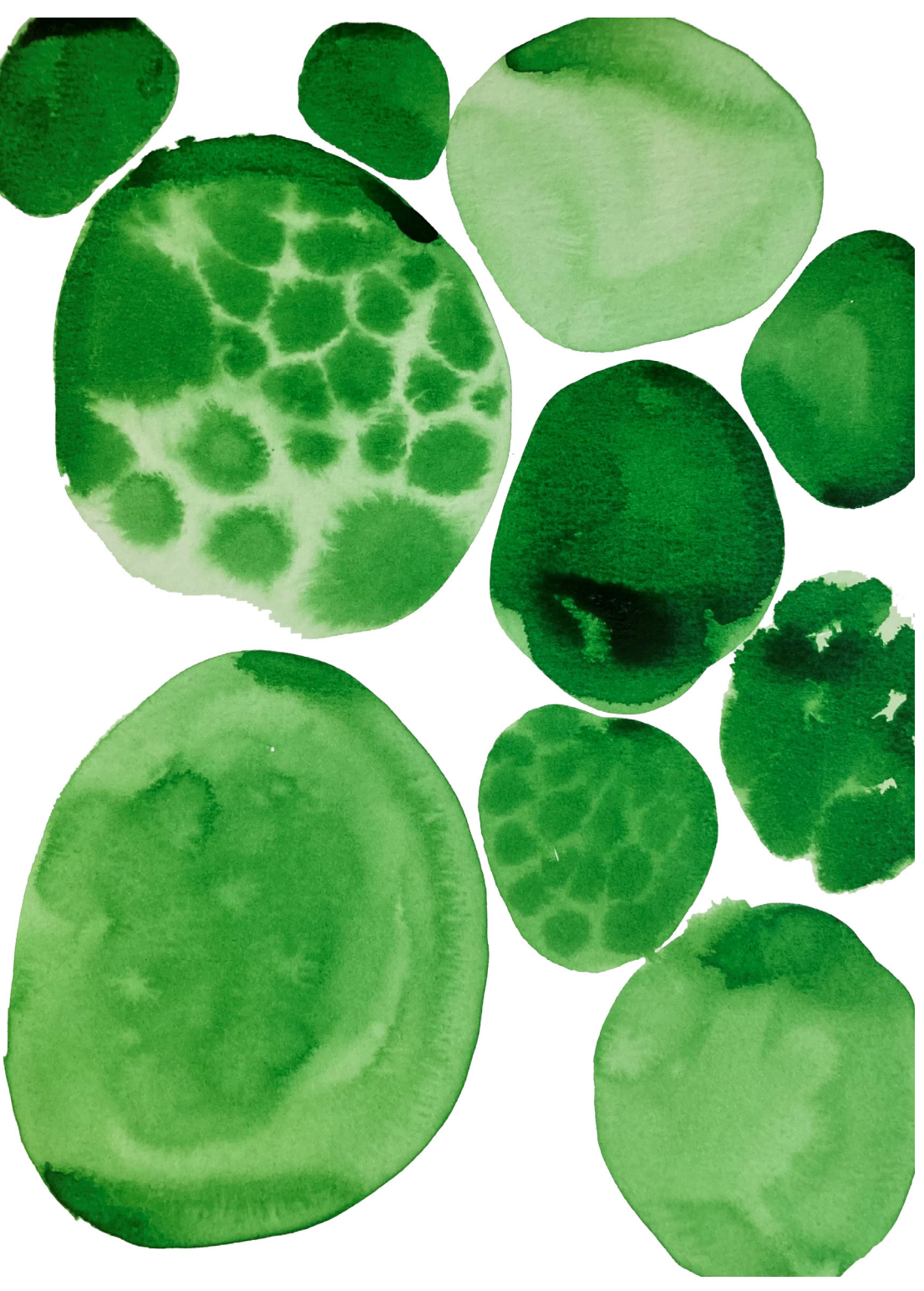
WHAT IS STORY TELLING?

Storytelling can be a way for people to know and look at their environment in different ways. Through sharing our stories, we explain our relationship to a place and become more connected to it. It can help shift our routine ways of living and change what we know about a place by presenting other points of view. Sharing and visualizing stories can help us think about and document changes in our urban landscapes and neighborhoods. Storytelling can also be used to resist hurtful actions that have harmed communities.

East Boston today was built by stories. The most common story of Eastie has been told by architects, city planners, developers, and government officials who influence how Eastie was built. Because it is so close to downtown Boston, East Boston has long been used as a place for people, money and goods flow through, but rarely stay. For over a century, it has been a place for people to exploit and pollute. In most of East Boston's history, the beauty of the landscape was not as important as what could be built on the land.



But what about the stories of East Boston neighbors or visitors? East Boston is also a gateway for newcomers to make a home out of the urban landscape. They are the Irish, Italian, Latino and Arab people who have transformed East Boston into a place for community. Here, neighbors have made long and difficult journeys to find new and safe opportunities to grow. It is a neighborhood of drivers and decision-makers eager to continue their stories by making alternative futures. Storytelling is being used by Eastie communities, advocacy groups and individuals to highlight local views and experiences which have not historically been part of the community planning process. They have demonstrated their power and resolve against outside development, like the airport and recently opposed Eversource substation, which detract from the character of East Boston.



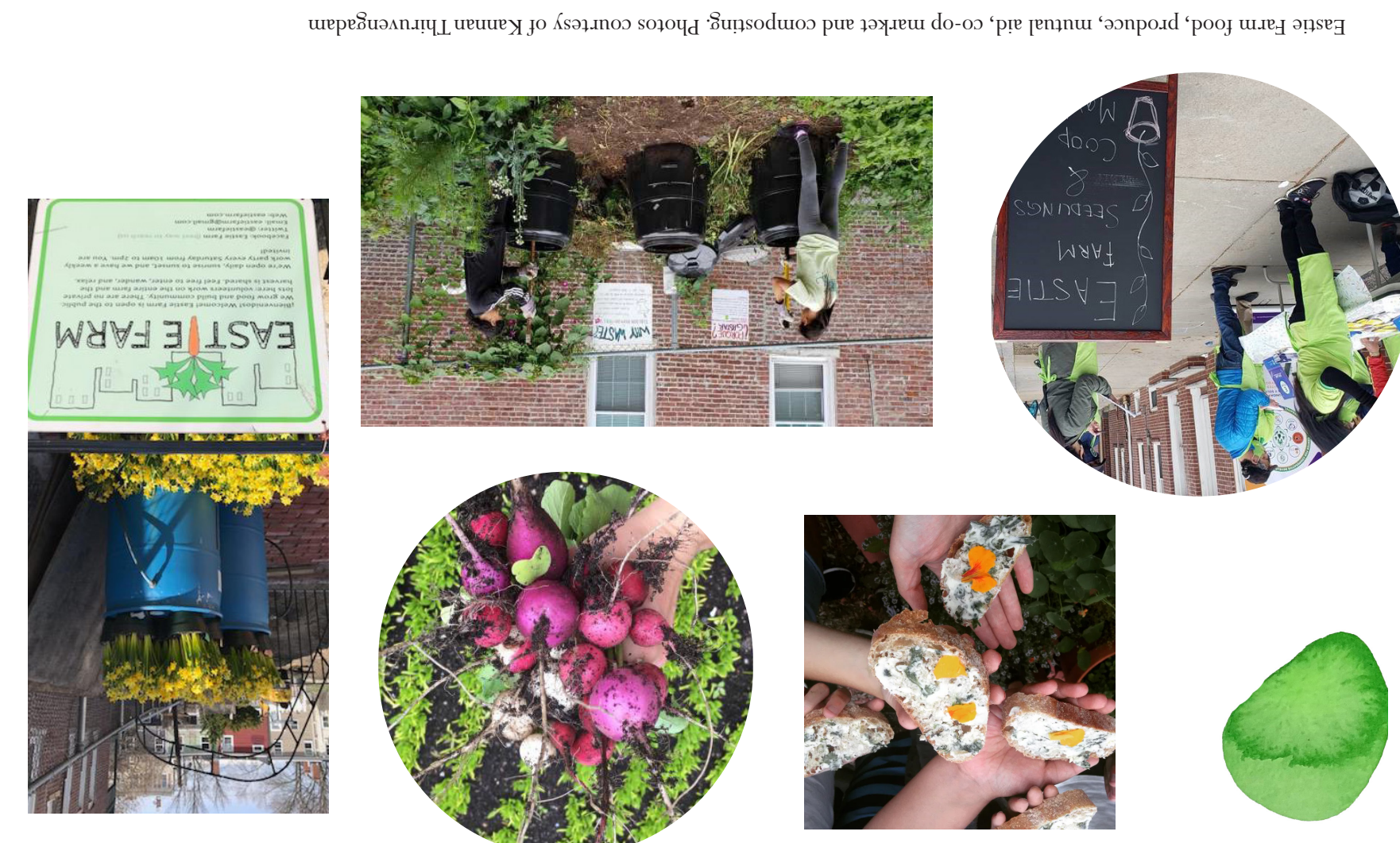
This pamphlet is one of four documents created by graduate students in the East Boston Site and Environmental Systems Practicum - Department of Urban Studies and Planning, MIT Spring 2021. These pamphlets can be read alone or together. They discuss East Boston's power and decision making processes, offer storytelling as a way to understand East Boston's past and future and propose new visions for Condor Street in Eagle Hill and Harbor View in the Belle Isle Marsh.

RITUALS, HONOR & MEDITATION

Rituals are our day-to-day practices and our moments of celebrations. Prayer is a ritual. We might think of prayers in a traditional sense as a conversation with God. But, prayers can also be a conversation with the landscape. These are the moments where we say good morning to the birds outside our windows, take a stroll across the land and feel the earth under our feet and the wind on our faces. They are moments of reflection and gratitude for the Earth that gives us life. They take time, attention, and being present. We also share these moments with our neighbors when we garden together, share food, and care for each other. In East Boston, Eastie Farm provides nourishment for the community and provides a space for plants to thrive. People give to Earth and Earth gives back.



For more information on Eastie Farm, visit:



Eastie Farm food, produce, mutual aid, co-op market and composting. Photos courtesy of Kannan Thiruvengadam

HISTORIAS: STORYTELLING IN EAST BOSTON

Welcome! Come along with us as we explore different approaches to storytelling, and highlight some examples where East Bostonians have flipped the story and inspired people to share their stories.

WANT TO MAKE YOUR OWN ART AS AN ACT OF STORYTELLING?

Come color with us!

The Sea Walls Boston team has collaborated with Bow Sea/Ocean Awareness Programs to create a coloring book for local youth to engage in Sea Walls Boston and build a sense of ownership and pride for the artworks painted during 2020.

To download the coloring book, visit: Or find it on the shelves of the Boston Public Library!



MAPS

Maps tell stories, too. They often show a place from above, but there's no depth to a map—it's flat. Maps are useful objects; they tell us how to get from point A to point B. But maps don't tell us what it means to be somewhere. They can't show the sounds of trees and birds, the smell of the air, the long histories of the landscape or the names of the people who live and have lived in these places. Maps are wonderful storytelling tools, but we can make them more than top-down views. Can we re-imagine maps and how they're used? How could we show a neighborhood and actually tell its stories?

MAPS OF EAST BOSTON TODAY

Expected sea level rise maps show how low land was created across the former marshland. Today's maps often show the neighborhood is vulnerable to flooding and sea level rise. While these mappings are useful, they hide other things that happen on the land. They hide human stories and histories held by people now and people of the past. Maps of East Boston, for example, don't often show the Belle Isle Marsh tectonic with life, a vast and intricate ecosystem in less than 200 hundred acres. Maps don't show how people engage with each other and with the ecosystem. Instead, you'll just see a green area, flat and monotonous. What's lost in these traditional mappings?

COUNTER MAPS

Counter maps are another way of representing the things that may be unseen. This counter map of East Boston offers another way of seeing the Eastie **Downtown**, as a place where bridges are built across culture.

Follow this link to learn about other kinds of mapping:



We acknowledge Indigenous Peoples as the traditional stewards of the land, and the enduring relationship that exists between them and their traditional territories. The land of East Boston and the land on which this project was produced is the traditional unceded territory of the Wampanoag Nation and Massachusetts Peoples. We acknowledge the painful history of genocide and forced occupation of these territories, as well as the ongoing processes of colonialism and dispossession in which we and our institution are implicated.

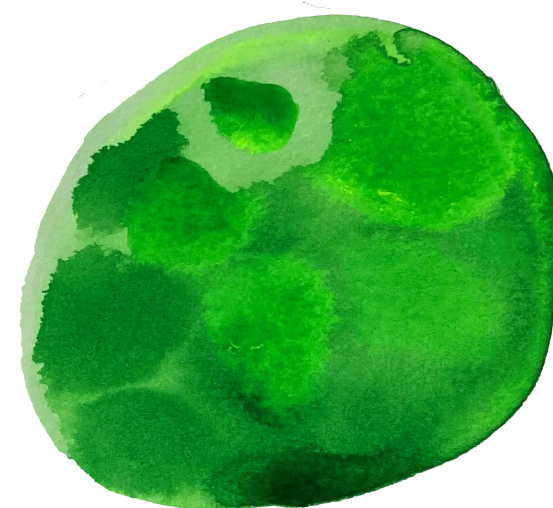
Beyond the stolen territory which we physically occupy, MIT has long profited from the sale of federal lands granted by the Morrill Act, territories stolen from 82 Tribes including the Greater and Little Ojage, Chippewa, and Omaha Peoples. As we honor and respect the many diverse Indigenous peoples connected to this land from time immemorial, we attempt to deconstruct Western knowledge and ways of doing urban planning by drawing from Indigenous and Black planners.

- Adapted from MIT 11.S938 Indigenous Environmental Planning course.



To access this PDF online or download and print, follow the QR code above or visit: eastbostonpracticum.mit.edu/historias-toolkit

This Toolkit was created by Alex Gant, César García López, Michelle Mueller Gámez, and Christian Turner - Masters Students in the Department of Urban Studies and Planning at MIT. We'd like to thank our wonderful teaching team: Eran Ben-Joseph, Mary Anne Ocampo and Tanvi Sharma and many EB community partners who helped advise on this project, including: Kannan Thiruvengadam, Latifa Ziyad, Frank O'Brien, Chris Marchi, Heather O'Brien, John Walkey, Kairos Shen, Ted Schwartzberg, Meera Deean, Kristina Ricco and Brittany Thomas.



TELLING DIFFERENT STORIES

ORGANIZATIONS TELLING THEIR OWN STORIES OF EAST BOSTON



NEIGHBORS UNITED FOR A BETTER EAST BOSTON (NUBE)

NUBE is an organization that develops abundant leaders who support social transformation and shifting political power. Their leaders organize and advocate for inclusive democratic processes and just public policies to create a vibrant economy and environment for all East Boston. NUBE's work is guided by the deep commitment to developing a more just, understanding, and sustainable neighborhood. tinyurl.com/zpk332b7

PUEBLO Coalition

PEOPLE UNITED IN EAST BOSTON FOR LIBERATION AND ORGANIZING (PUEBLO)

PUEBLO is a coalition of stakeholder organizations that preserve and enhance East Boston's neighborhoods so that they are accessible and affordable. PUEBLO seeks to protect the natural environment by building the collective power and strength of East Boston residents who are most impacted by displacement. They seek to strengthen community unity and solidarity, through shared prosperity and mutual benefit while stewarding the environment for the benefit of current and future generations. tinyurl.com/9tbf2s3

CENTER FOR COOPERATIVE DEVELOPMENT AND SOLIDARITY (CCDS)

CCDS provides technical, educational and organizational support to current and potential members of cooperatives in East Boston. CCDS helps develop worker-owned cooperative opportunities for decent work with decent pay for minority, immigrants and low-income residents of East Boston thus advancing a sustainable and permanent social and economic justice neighborhood. CCDS is part of the Solidarity Economy Initiative, a Massachusetts-based project that creates space for grassroots organizers working in working class communities of color to lead a just transition to a solidarity economy. tinyurl.com/yjxd84ad



MASS COSH IMMIGRANT WORKER CENTER (MASSCOSH)

The Immigrant Worker Center is a safe place for immigrants to speak up about workplace abuse and join with a powerful network of workers demanding safe and healthy working conditions. The Worker Center builds the power of immigrants and workers of color to mobilize for safe and healthy work conditions. Massachusetts Coalition For Occupational Safety And Health (MassCOSH) unites workers, unions and community groups with environmental and health activists, to end dangerous work conditions, to organize for safe, secure jobs, and to advocate for healthy communities. tinyurl.com/y2ybb8uw



MUTUAL AID EASTIE COALITION

Mutual aid is a form of solidarity-based support system where communities unite against a common struggle, rather than leaving individuals to fend for themselves. Eastie Farm in collaboration with NUBE, COSECHA and Empower East Boston provides direct financial support to immigrants and their families across Massachusetts, including East Boston, New Bedford, Lawrence, and Worcester—specifically undocumented individuals and families, who have been excluded from receiving stimulus checks and other government resources. tinyurl.com/kz2839hk



CENTRO PRESENTE

Centro Presente is a member-driven, statewide Latin American immigrant organization dedicated to the self-determination and self-sufficiency of the Latin American immigrant community of Massachusetts. Operated and led primarily by Central American immigrants, Centro Presente struggles for immigrant rights and for economic and social justice. Through the integration of community organizing, leadership development and basic services, Centro Presente strives to give our members a voice and build community power. tinyurl.com/stw5wbyk



CITY LIFE VIDA URBANA

City Life/Vida Urbana is a grassroots community organization committed to fighting for racial, social and economic justice and gender equality by building working class power. This organization promotes individual empowerment, develops community leaders and builds collective power to effect systemic change and transform society. bit.ly/3h1ZGQh



IGLESIA NUEVO AMANECER

Iglesia Nuevo Amanecer is a faith-based group deeply engaged in the communal and individual pursuits of liberation and love. In light of the crises of COVID-19, gentrification and displacement, Nuevo Amanecer is involved in organizing and working on direct response initiatives with the East Mutual Aid network, and PUEBLO and Stand for Democracy, a faith-based organizing group. tinyurl.com/5bva2x5h



GREENROOTS

GreenRoots is a community-based organization dedicated to improving and enhancing the urban environment and public health in Chelsea and surrounding communities. GreenRoots works to achieve environmental justice and greater quality of life through collective action, unity, education and youth leadership across neighborhoods and communities. They do so through deep community engagement and empowerment, youth leadership and implementation of innovative projects and campaigns. tinyurl.com/3x22u2kz

WHAT TREASURES DO YOU SEE IN EAST BOSTON?

SKETCH MAPPING

Sketch maps help us create a story of an experience. They help us see how we experience everyday places. To start, we begin drawing a space or route, like a neighborhood or path to work. Then we point out key things that are important to us. Because everyone experiences a place differently, a sketch map helps us see our neighborhood from another point of view and understand what matters in the places around us.

EXAMPLE: SKETCH MAPPING



Write about why you colored in those places! What do the colors mean to you? Which parts of your neighborhood are you thinking about?

Where do you go to relax and have fun?

Where do you feel the safest in your community? Where would you go in an emergency?

Who do you know in your community? Who do you feel like you can count on?

Where do you go to fulfill your daily needs?

What is one of your favorite memories in East Boston? Where did it happen?

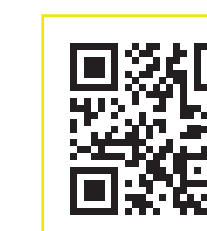
Where do you go to partake in community events?

SKETCH MAPPING EXERCISE

Use this space to draw a sketch map of your route home. What important people, structures or plants do you see?

If you'd like to learn more about any of the storytelling methods explored in this toolkit, follow the links below!

RECOUNTING HISTORY RESOURCES



RITUALS AND HONOR RESOURCES



ART MAKING RESOURCES



COUNTER MAPPING RESOURCES



ALTERNATIVE STORYTELLING RESOURCES

NEIGHBORS UNITED FOR A BETTER EAST BOSTON (NUBE) tinyurl.com/zpk332b7

PEOPLE UNITED IN EAST BOSTON FOR LIBERATION AND ORGANIZING (PUEBLO) tinyurl.com/9tbf2s3

CENTER FOR COOPERATIVE DEVELOPMENT AND SOLIDARITY (CCDS) tinyurl.com/yjxd84ad

MASS COSH IMMIGRANT WORKER CENTER (MASSCOSH) tinyurl.com/y2ybb8uw

MUTUAL AID EASTIE COALITION tinyurl.com/kz2839hk

SKETCH MAPPING



CENTRO PRESENTE tinyurl.com/stw5wbyk

CITY LIFE VIDA URBANA bit.ly/3h1ZGQh

IGLESIA NUEVO AMANECER tinyurl.com/5bva2x5h

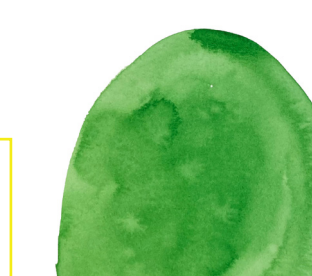
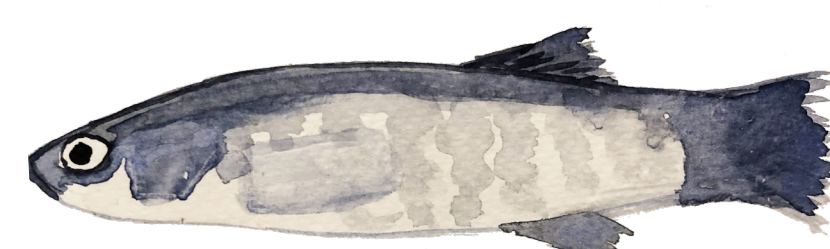
EAST BOSTON COMMUNITY SOUP KITCHEN tinyurl.com/472udhvh

GREENROOTS tinyurl.com/3x22u2kz

TREASURE AND ASSET MAPPING RESOURCES



Find out more about the critters on these pages and the vibrant life of the Belle Isle marsh in the companion toolkit, CRITTERS AND MAPS ALONG THE EDGE



FINDING COMMUNITY TREASURES

What is Treasure Mapping?

Treasure mapping is a way to highlight what you value most in your neighborhood. Treasure can be physical (for example, certain buildings, water or parks), economic (such as the stores or restaurants we like), or cultural (for example, schools, libraries, local organizations or neighbors themselves). You can compare your treasure map with your friends and family to create a powerful story that explains why your neighborhood matters!

To learn more about treasure mapping, follow this code



COVID-19 has been a challenging time for so many reasons. Let's reflect on the memories, skills, resources and knowledge that you have about East Boston and create your own map that tells this story!

Basic Needs and Community Services Parks Soccer Field Fishing Spot...	Security and Safety Community Center Library
Recreation and Relaxation Grocery Store Favorite Bodega Health Clinic	People Family members Neighbors Friends
Neighbors Place of Worship Community Center	Stories and Memories



Color in a place or spot of the map where you feel like you feel a sense of **NEIGHBORHOOD** or a place where you feel like you can **RELAX** and have fun with **FRIENDS AND FAMILY**.

Maybe color in where you and your family go for your **BASIC NEEDS** or where you might go to feel **SAFE**. Finally, color in any place where your favorite **STORIES AND MEMORIES** happened!